



**KUMA Technology** Parallel bipolar radio frequency delivery uses a vacuum to position the target tissue between parallel electrodes and concentrates heat deep in the dermis.

**SRV-104**  
Sincoheren™  
design by sinco

*Kumo shape™*

Circumferential Reduction  
Cellulite Treatment

*Kumo shape™*




**KUMA Technology** Parallel bipolar radio frequency delivery uses a vacuum to position the target tissue between parallel electrodes and concentrates heat deep in the dermis.




**Sincoheren™**  
design by sinco

www.sincoheren.com.cn



**Beijing Sincoheren S & T Development Co., Ltd**

## Treatment theory



**Body shaping:** By changing the polarity of the electricodes of the organism tissue 10 million times in 1 second, the 10mhz bipolar high-frequency can heat the fat tissues in the layer 0.5-1.5cm under the skin to strengthen the spreading of the oxygen molecule, which can increase the exchange of the material of the cells and speed up the fat metabolism.

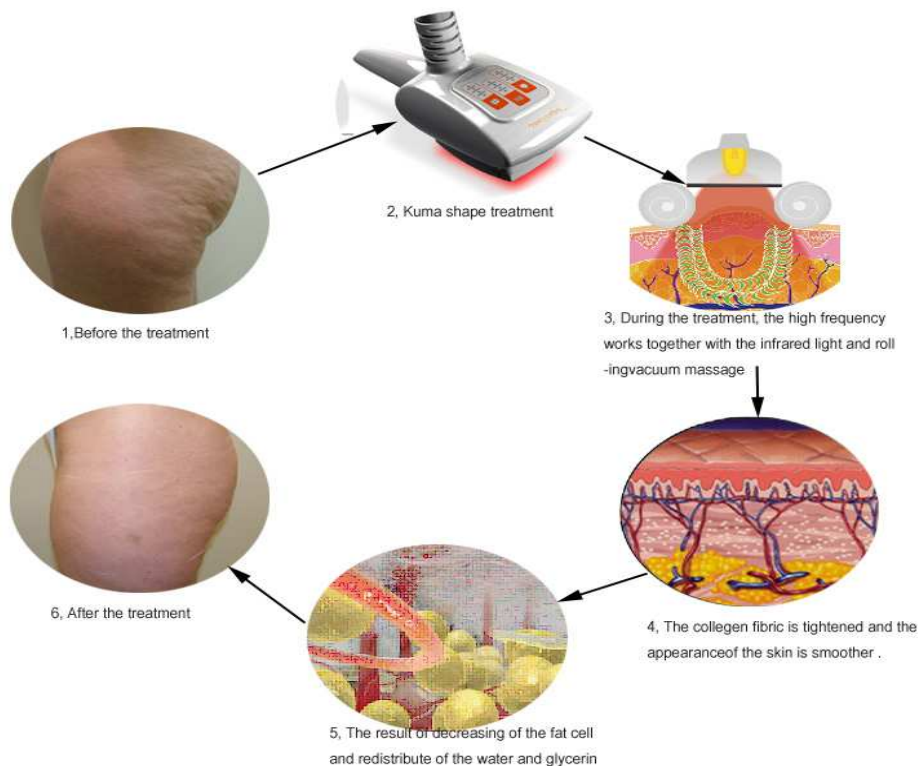
By heating up the fat tissue under the skin without hurting the epidermis layer, the 500-2000nm wavelength infrared light can decrease the size of fat cell and redistribute the water and glycerin.

By increasing the blood supply of the fat tissue, The Rolling vacuum massage can strengthen the release of the enzyme to speed up the fat metabolism.




**Cellulite removal:** By permeating epidermis and taking effect on the collagen-rich dermal tissue directly which makes water molecules in the skin move to and fro wildly, the high frequency wave, working together with rolling vacuum massage, can improve blood circulation and increase the oxygen in the targeted blood area, which makes the lymphatic system remove the waste and cure the fibrosis cellulite.

The infrared light can heat up the fibroblast of the connective tissue to accelerate the collagen and elastic fiber renascence.



# *Kuma shape system*

<b>Specifications</b>	RF Power	$\leq 50W$
	Infrared power	$\leq 20W$
	Spectrum range	700 – 2500 nm
	Vacuum	0-0.07MPa 0-50Hg ( Pulsed or continuous )
	Spot size	Body: 80 mm x 40 mm Arm: 12mm x 40 mm
	weight	30 kg.
	Demonson [w * d *h]	390*454*1155mm
	Power requirement	230 VAC; 50/60 Hz; Single phase

## **Advantage of kuma shape**

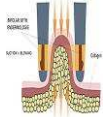


**10Mhz Bipolar radio frequency (RF)** on the two rolls can permeate into the layer 0.5-1.5cm under skin to work on the fat tissue effectively.



**700-2500nm infrared light** can heat up the fibroblast of the connective tissue to accelerate the collagen and elastic fiber renascence, and also accelerate the blood circulation to speed up the fat cell metabolism.

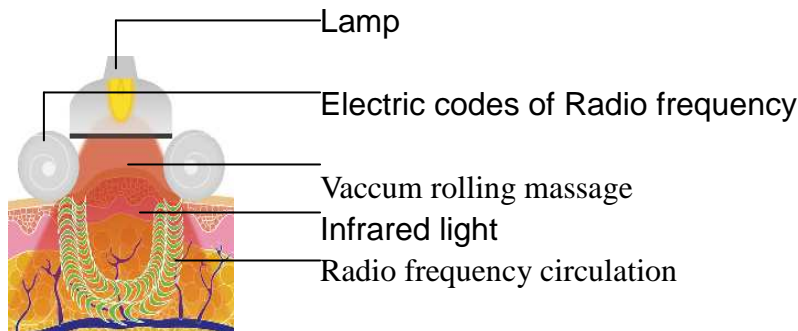




**0-50HgAdjustable vacuum** make the skin tissue attracted

into the space between two electrodes. Inhalational tissue

can be controlled accurately.



### **Kuma shape indications**

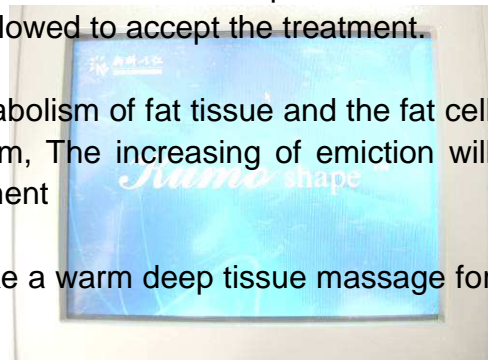
1, **Fat burning and body shaping** --- narrow the size of the buttocks and thighs reduce abdominal fat and body-firming.

2, **Cellulite removal** -----The treatment is suitable for all kinds of skin color to remove the undesired fat and cellulite on the skin.



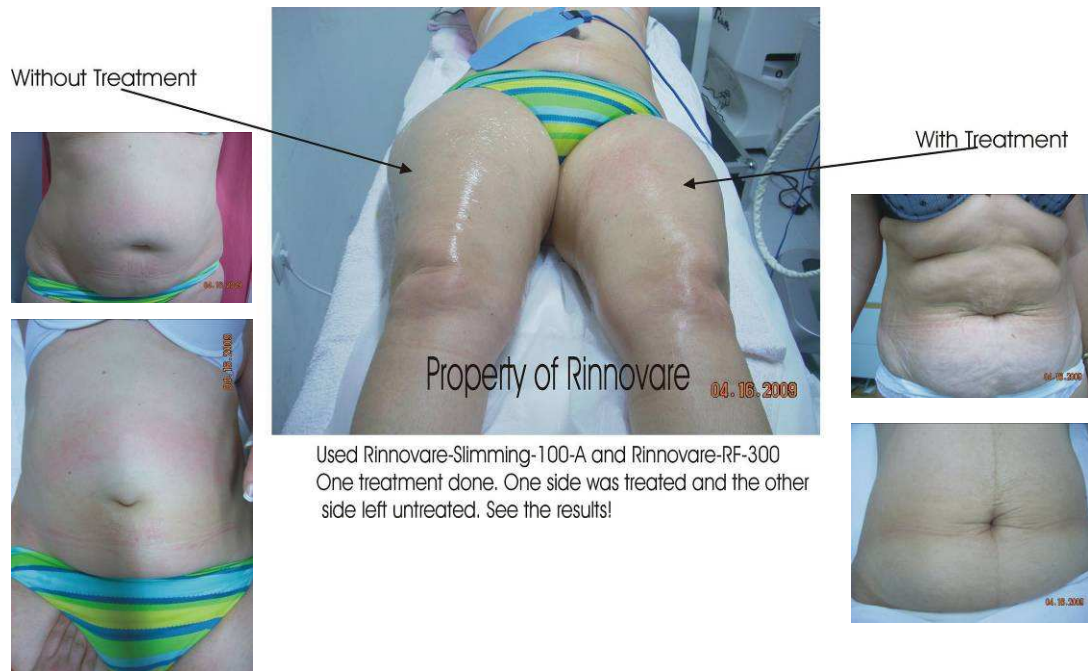
### **About the treatment**

- ✧ According to the clinical data, The initial series consists of 15 treatments are performed twice a week , each treatment needs 45-60 minutes long and usually it only needs 4 weeks to see obviously result.
- ✧ 70% cellulite is cleared effectively.
- ✧ The size of buttocks, thigh and abdominal is reduced obviously.
- ✧ Usually 2-3cm will be reduced on the buttocks
- ✧ Temporary congestion and swelling in the treated area will happen and continue for only an hour, which cause by the acceleration of blood circulation. It is normal reaction after treatment and no need to be treated specially. If there is wound in the targeted area and the patient who are using anticoagulant medicine, it is not allowed to accept the treatment.
- ✧ Since the system can promote the metabolism of fat tissue and the fat cell will be absorbed the lymphatic system, The increasing of emiction will happens after whole comfortable treatment
- ✧ The treatment is comfortable; it feels like a warm deep tissue massage for most patients.



**Beijing Sincoheren S & T Development Co., Ltd**

## Before and after picture



Beijing Sincoheren S & T Development Co., Ltd



**Beijing Sincoheren S & T Development Co., Ltd**